

	PETROL 95 ULP	PETROL 93 ULP & LRP	DIESEL 0.05%	DIESEL 0.005%	ILL. PAR.
GAUTENG PUMP PRICE (SA c/l) AS FROM 02/12/2020	1,446.000	1,426.000	-	-	-
WHOLESALE PRICE (SA c/l) AS FROM 02/12/2020	-	-	1,245.420	1,247.820	684.688
SINGLE NATIONAL MAXIMUM RETAIL PRICE	-	-	-	-	856.000
BASIC FUEL PRICE - 02/12/2020 (SA c/l)	506.553	500.097	524.486	526.061	509.073
PRESS RELEASE CONTRIBUTION TO BFP 02/12/2020 - 02/12/2020 (SA c/l)	479.170	469.170	486.630	489.030	472.128
UNIT OVER/(UNDER) RECOVERY - 02/12/2020 (SA c/l)	(27.383)	(30.927)	(37.856)	(37.031)	(36.945)
AVERAGE BASIC FUEL PRICE 27/11/2020 - 02/12/2020	508.611	501.172	527.148	528.319	511.013
AVERAGE UNIT OVER/(UNDER) RECOVERY 27/11/2020 - 02/12/2020	(8.966)	(11.527)	(49.518)	(48.289)	(54.635)

### ANALYSIS MOVEMENT OF AVERAGE OVER/(UNDER) RECOVERY

- MOVEMENT IN INTERNATIONAL PRODUCT PRICES

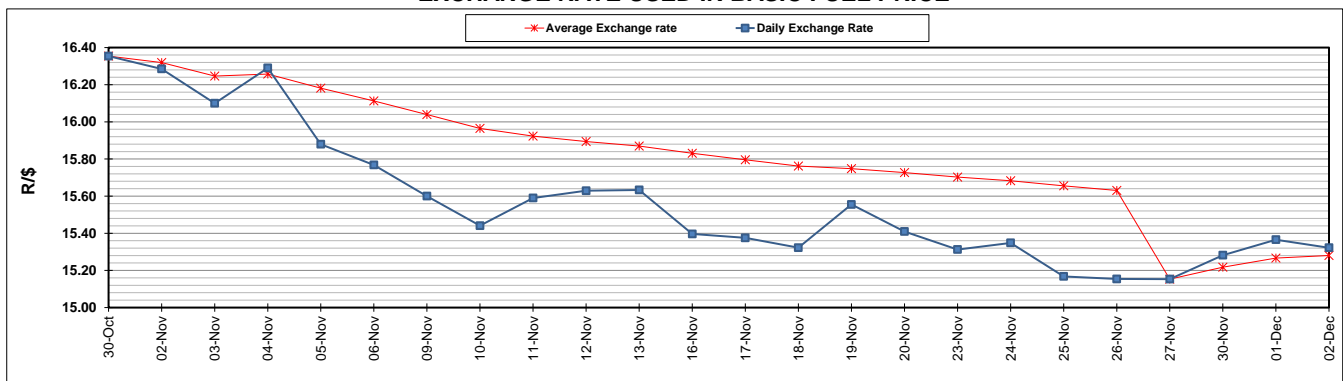
- MOVEMENT IN EXCHANGE RATE

AVERAGE UNIT OVER/(UNDER) RECOVERY 27/11/2020 - 02/12/2020

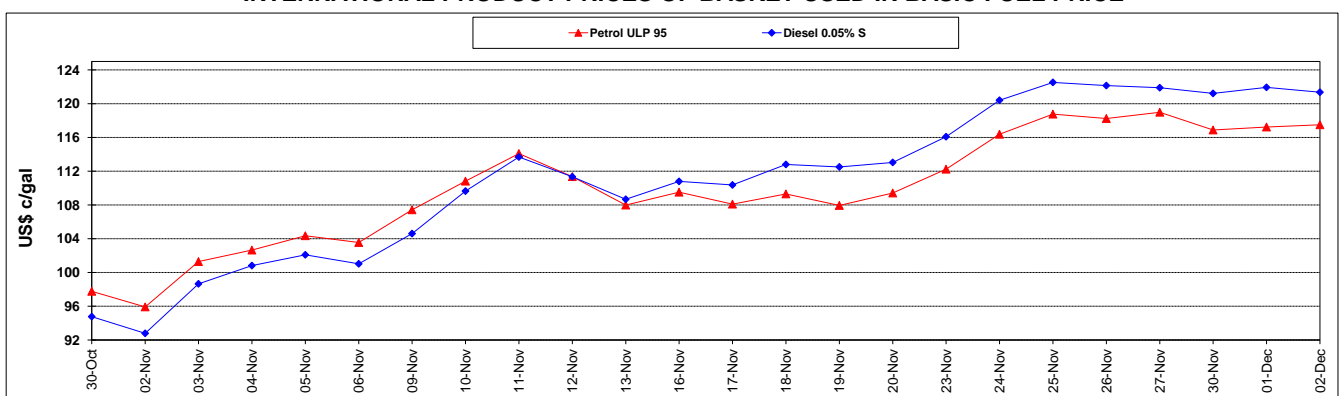
	PETROL 95	PETROL 93	DIESEL 0.05%	DIESEL 0.005%	ILL. PAR.
	(20.616)	(23.006)	(61.592)	(60.390)	(66.340)
	11.650	11.479	12.074	12.101	11.705
	(8.966)	(11.527)	(49.518)	(48.289)	(54.635)

**R/\$ EXCHANGE RATE - (R/\$15.3220 - 02/12/2020)**

### EXCHANGE RATE USED IN BASIC FUEL PRICE



### INTERNATIONAL PRODUCT PRICES OF BASKET USED IN BASIC FUEL PRICE



### BASIC FUEL PRICE IN SA CENTS PER LITRE

